

# MEG Industry Monitor

An **MEG Strategic Advisory Service**—supply-side intelligence for industry decision-makers.

A series of graphs with commentary **track developments** and **analyze data** and information only available from MEG—from initial drill results to financing and production.

## Clients use the MEG Industry Monitor to...

- ▶ See leading indicators of how the mining industry is performing
- ▶ Locate areas in which to grow
- ▶ Drill down into rich details to support forecasting and planning
- ▶ Provide clear information to management and add weight to presentations
- ▶ See the macro trends in the industry

## The MEG Industry Monitor is...

### Broad and deep

From drill results to acquisitions, the information keeps management informed of the latest developments, with details to reinforce your view of the current environment.

### Informed analysis

Quickly scan industry movements captured in our charts and graphs, and review related commentary and analysis.

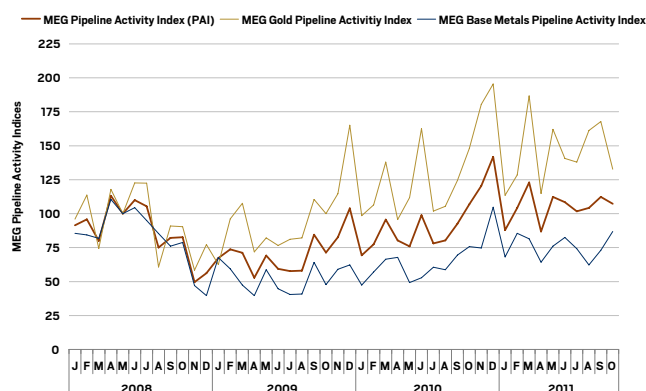
### Additional value

Gain additional value by carefully considering MEG's examination of the data and by performing your own analysis.

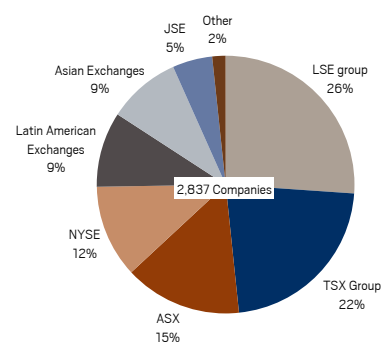
### Accurate, up-to-date, and verified

Stay current with data drawn from MEG's trusted databases and analytical research. Provides an aerial view of the industry and complements our other services.

**MEG Pipeline Activity Indices for Gold, Base Metals, and All Metals**



**Aggregate Market Cap by Exchange Group, October 2011**



Top 100 companies account for 89% of Aggregate Market Cap

**A visual, up-to-date overview of emerging trends** in exploration, project development, financings, and acquisitions in the precious and base metals pipeline.

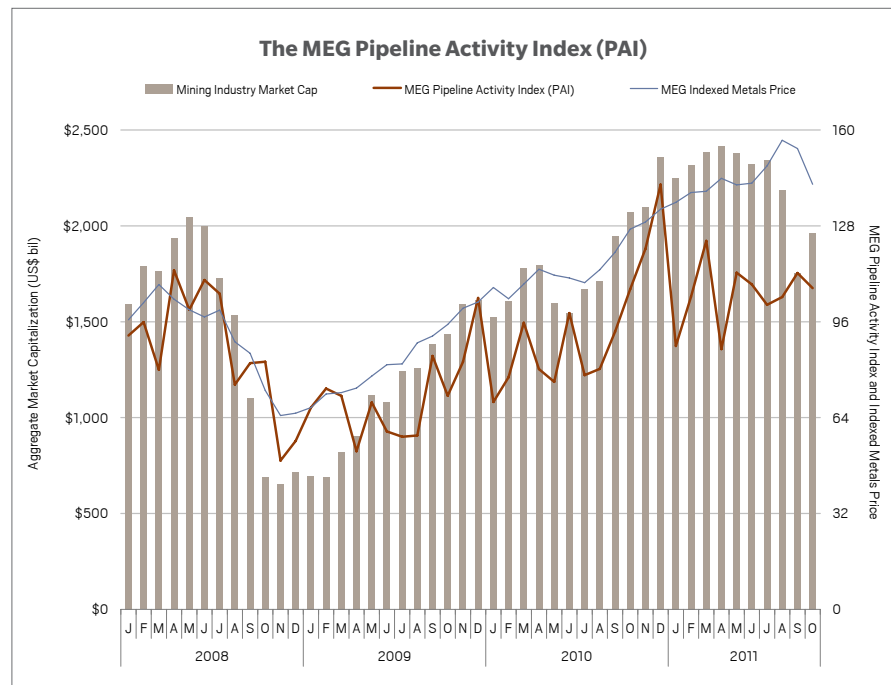


## MEG Industry Monitor Features

### The MEG Pipeline Activity Index (PAI)

The PAI measures the level and direction of overall activity in the supply pipeline; it incorporates significant drill results, initial resource announcements, project development milestones, and significant financings into a single comparable index.

The Index measures the relative change in overall pipeline activity compared with changes in industry market capitalization and metals prices.



### Significant drill results

Reviews the changes in volume of significant drill results announcements (segmented by initial finds, new zones/satellites, and extensions of existing deposits), with a further breakdown by region.

### Initial resources

Reviews the number and value of new initial resource announcements, including a breakdown of the relative value of initial resources by region.

### Project milestones

Monitors positive and negative changes in the number and value of projects undertaking feasibility studies; making production decisions; or entering, expanding, or cutting back production. Also monitors positive announcements by region.

### Financings

Tracks junior and intermediate financing activity, including a breakdown of amounts raised by financing type.

### Acquisitions

Follows the number of and price paid for company and project acquisitions, with a breakdown of the value acquired by stage of project development.

### Download underlying data

Subscribers to underlying services can link to detailed information (in Excel spreadsheets) that underpins relevant charts and graphs.