



# MEG Strategic Advisory Services

Keep your finger on the pulse of trends in emerging exploration, project development, financings, and acquisitions with MEG's Strategic Advisory Services—supply-side intelligence for industry decision-makers.

## MEG Industry Monitor

A graphic overview of key emerging developments in the precious and base metals pipeline.

Advance praise from MEG clients for the new MEG Industry Monitor...

"Deep statistical analysis of the industry, what it is doing, and where it is going."

"From drill core to acquisitions, management knows it's not missing a beat."

"It allows us to track the details and ask - Have we missed that?"

"This tool lets me watch for emerging trends that could impact my business and offers signals to where we can grow our market."

"We tend to get caught up in the trees—this allows us to see the forest."

The bimonthly MEG Industry Monitor incorporates continuing coverage of key supply-side issues, using data and information only available from MEG.

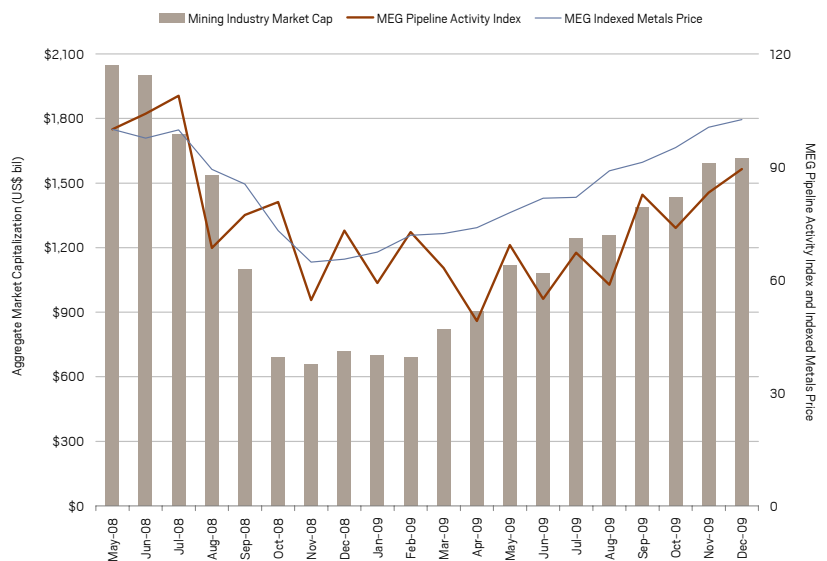
- Focused on exploration, project development, financings, and acquisitions
- Based on data drawn from MEG's major services, the MEG Industry Monitor provides both
  - Early-warning signals of opportunities and emerging trends
  - Graphic, comprehensive backup for strategic decisions

### GRAPHS & COMMENTARY

Each issue of the MEG Industry Monitor consists of 16 comparable views of industry activity, each with several graphs and concise commentary. These track developments based on announcements over the past two years of

- significant drill results,
- initial new resources,
- project development milestones,
- significant financings, and
- acquisitions.

MEG Pipeline Activity Index (PAI)



A summary of the activity covered in the MEG Industry Monitor is illustrated in the Pipeline Activity Index—an overview of pipeline activity for the last two years.

## OVERVIEW

Each section includes three graphs divided into an overall view, and a further breakdown by gold and base metals. It also includes commentary on trends for the current two-month period, comparisons with the previous two-month period, and the two-month period one year ago, and a listing of the leading specific developments in the past two months.

### Significant Drill Results

Reviews the changes in volume of significant drill results announcements (segmented by initial finds, new zones/satellites, and extensions of existing deposits), with a further breakdown by regions. (Source - MEG's Exploration Activity Services)

### Initial Resources

Reviews the number and value of new initial resource announcements, including a breakdown of the relative value of initial resources by region. (Source - MEG's Exploration Activity Services)

### Project Milestones

Monitors positive and negative changes in the number and value of projects undertaking feasibility studies, making production decisions, or entering, expanding, or cutting back production; and positive announcements by region. (Source - MEG's MineSearch database)

### Financings

Tracks junior and intermediate financing activity, including a breakdown of amounts raised by financing type. (Source - MEG's Exploration Activity Services)

### Acquisitions

Follows the number and price paid for company and project acquisitions, with a breakdown of the value acquired by stage of project development. (Source - MEG's Acquisitions Services)

### The MEG Pipeline Activity Index (PAI)

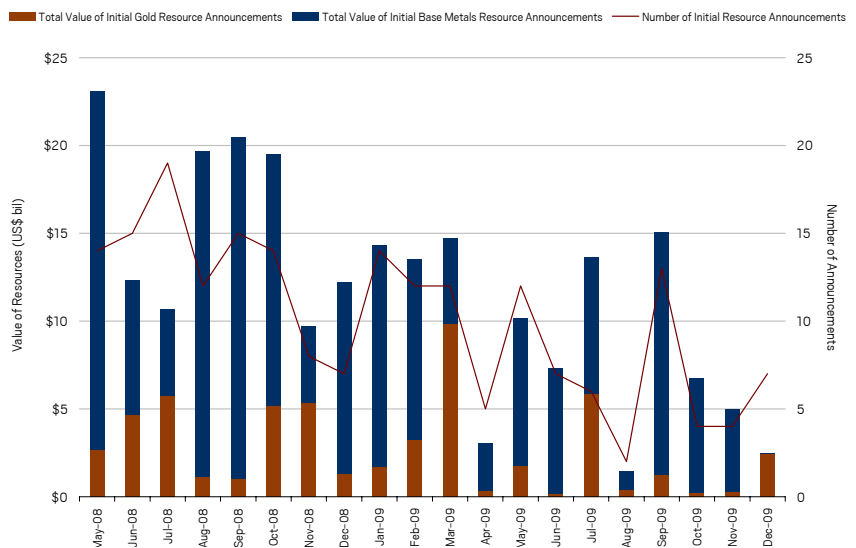
Indexes the relative change in overall pipeline activity, compared with changes in industry market capitalization. For context, the PAI is compared with changes in industry market capitalization and metals prices.

### MORE VALUE FOR MEG CLIENTS

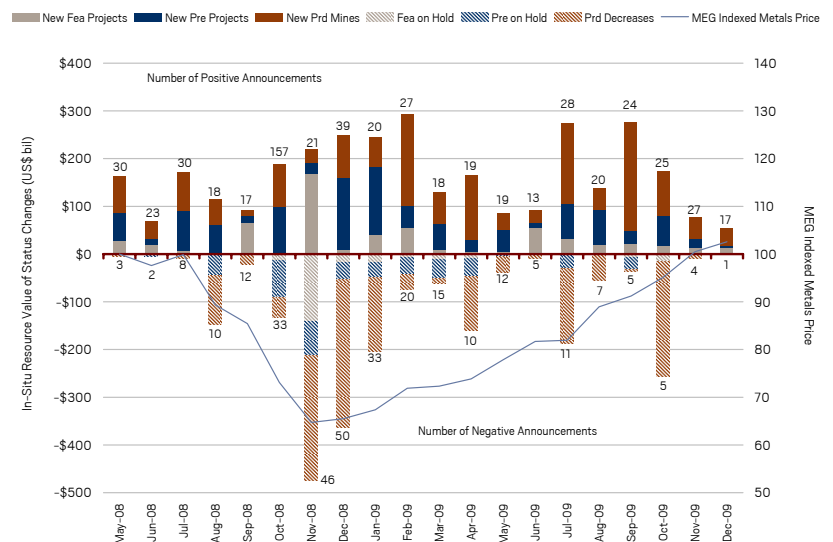
Subscribers to the MEG Industry Monitor are able to link to specific detailed information (in Excel spreadsheets) that underpins relevant charts and graphs.

## SAMPLE GRAPHS

### Initial Resource Announcements



### Project Milestone Announcements



### Acquisitions Announcements

